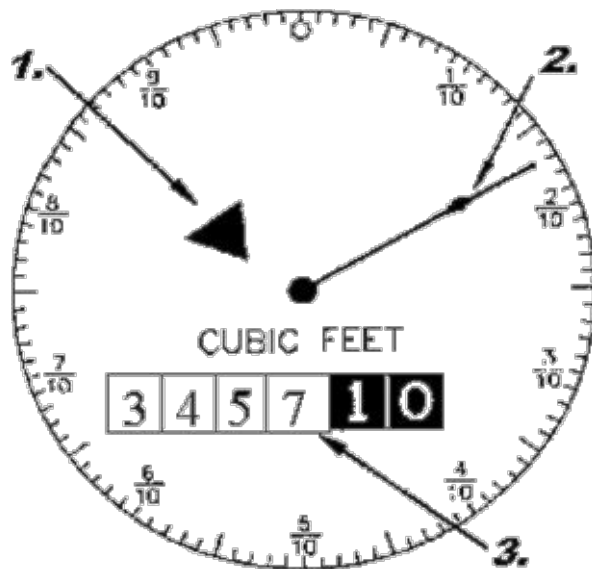


How To Read Your Water Meter

The meter dial pictured below is typical of most residential meters. The dial on the meter serving your home may look somewhat different, but they all work on the same principles.

1. Flow Indicator

This *flow indicator* triangle rotates whenever water flows through the meter. If the triangle turns when all the water is off on your property, you may have a leak, which should be investigated.



2. Register Sweep Hand

Each full revolution of the *register sweep hand* indicates that one cubic foot of water (about 7-½ gallons) has passed through the meter. The markings at the outer edge of the dial indicate tenths and hundredths of one cubic foot.

3. The Register

The *water meter register* is a lot like the mileage odometer on your car. The numbers keep a running total of all the water that has passed through the meter. The register shown here indicates that 345,710 cubic feet of water has passed through this meter.